

Title

Microsoft Dynamics GP - Creating an Intercompany Relationship

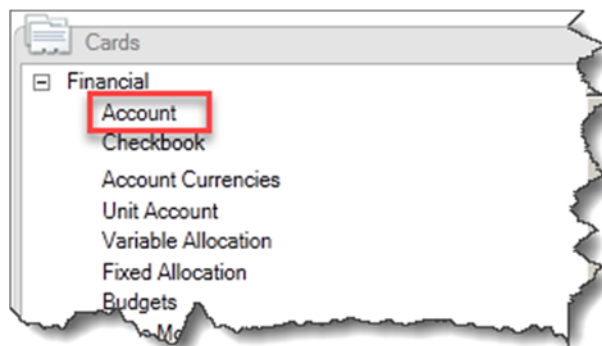
Overview

To detail the procedures and steps for creating an intercompany relationship within Microsoft Dynamics GP Multi-Entity Management (MEM).

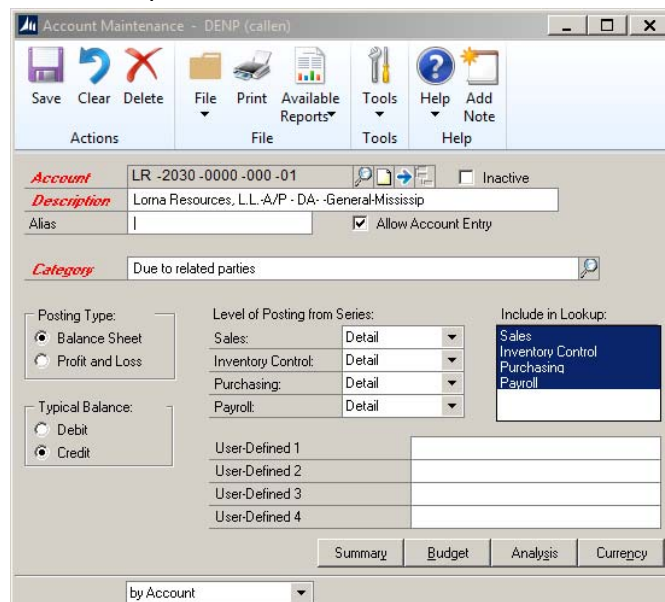
Instructions

1.0 Setup the General Ledger Accounts

- 1.1 Log into Microsoft Dynamics GP.
- 1.2 Select Financial within the Navigation Pane on the left hand side of the screen.
- 1.3 Under Cards >> Financial >> Account.



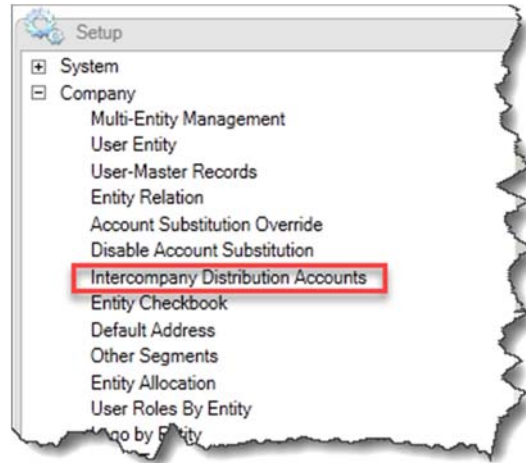
- 1.4 Set up the general ledger account(s) that will be linked in the intercompany relationship.



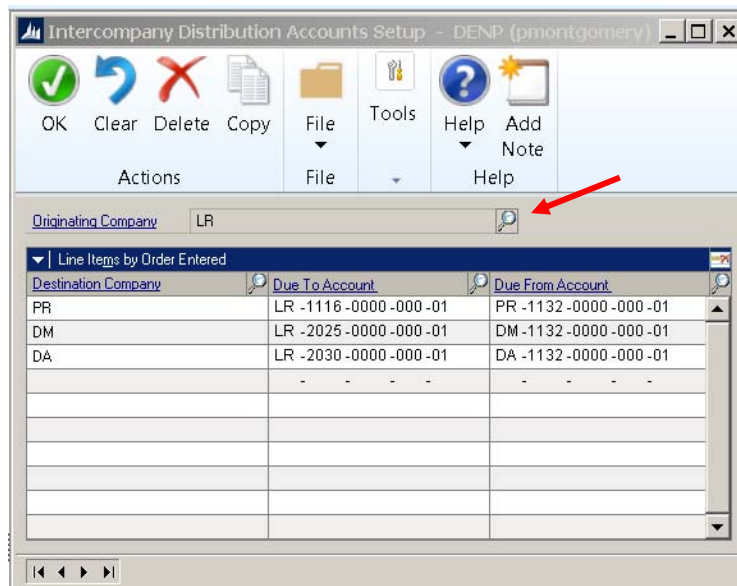
- 1.5 Save and close the screen.

2.0 Create Intercompany Relationship in Multi-Entity Management

- 2.1 Select Multi-Entity Management within the Navigation Pane on the left hand side of the screen.
- 2.2 Under Setup >> Company >> Intercompany Distribution Accounts.



- 2.3 Choose an originating company to add an intercompany relationship by selecting the lookup glass as shown below.



- 2.4 In the next available line, add the new general ledger account setup in Step 1.
- 2.5 Select OK to save the relationship and close the screen.

Note: Not all users in Microsoft Dynamics GP will have the rights to set up general ledgers accounts and/or intercompany relationships. Generally this is performed by POWERUSERS and/or SA USERS.

Resources / Notes

If you do not have the rights to setup general ledger accounts or intercompany relationships, check with your Partner or the person assigned as your company's SA user. They can review your security rights and setup.

Version of Dynamics GP or Third Party Solutions

Current version – GP2015

About of Author

I have attended the past three GPUG Summits. I have been using Microsoft GP Dynamics for 3 years, and I am currently pursuing my PCAD, PCAR, PCAP, and PCBI professional certificates.